

Specification

Living room and dining room

- Walls – painted stucco
- Flooring – green slate

Bedrooms

- Walls – painted stucco
- Flooring – wood

Kitchen

- Wall – composite stone and painted stucco
- Flooring – green slate
- Furniture – birch faced and composite stone
- Appliances:
 - Microwave oven
 - Main oven
 - Ceramic hob
 - Extractor fan
 - Refrigerator
 - Dishwasher

Bathrooms

Wc

- Wall – marble and painted stucco
- Flooring – marble
- Stone wash basin
- Sanitaryware by Catalano

Main en-suite bathroom

- Wall – marble and painted stucco
- Flooring – marble
- White ceramic wash basin
- Sanitaryware by Catalano

Bathrooms

- Wall – marble and painted stucco
- Flooring – marble
- White ceramic wash basin
- Sanitaryware by Catalano

Miscellaneous

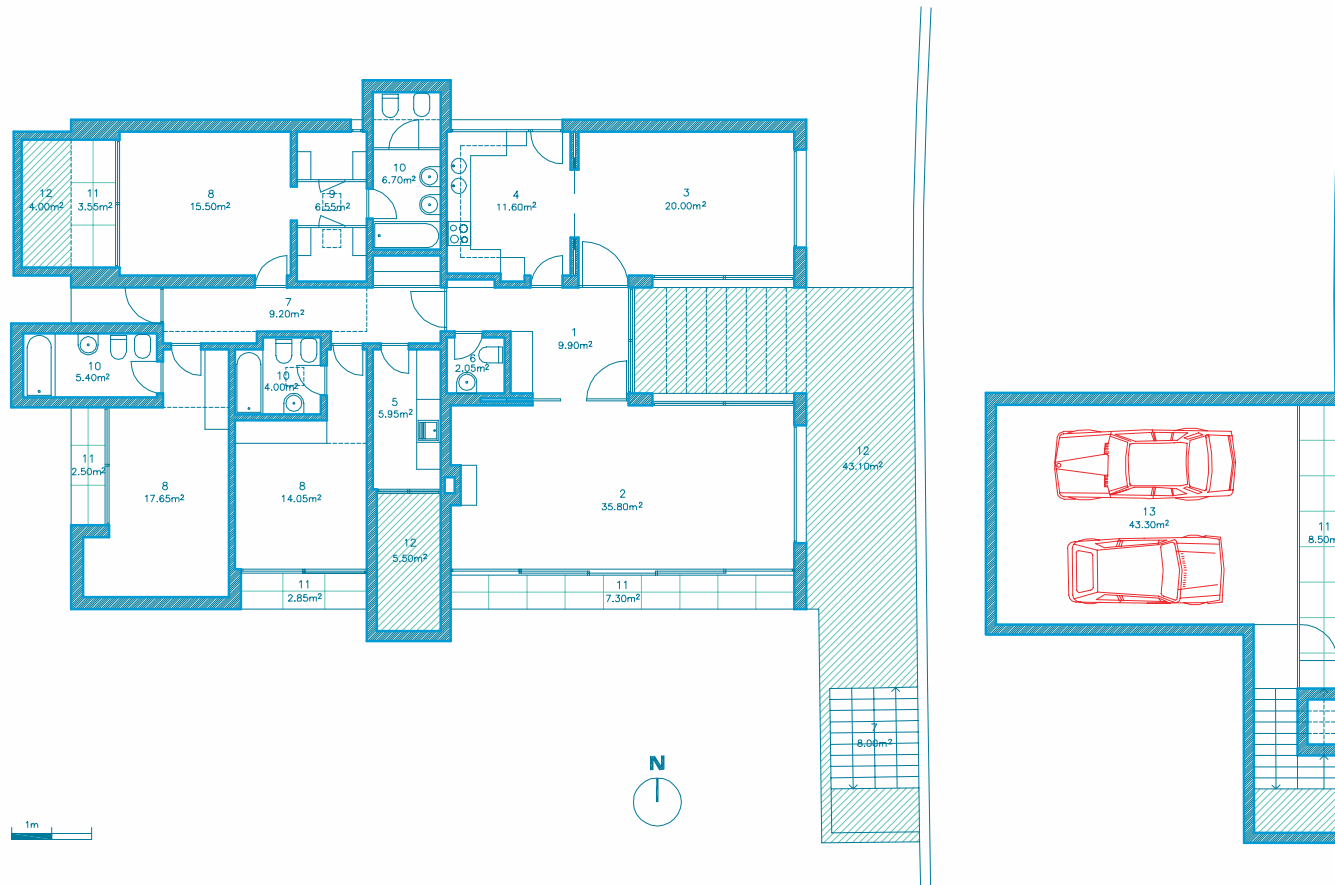
- Gas central heating
- Cable TV infrastructure
- Security alarm
- Broadband internet infrastructure
- Pre-installation for air conditioning
- Automatic roof irrigation system
- Fireplace or stove



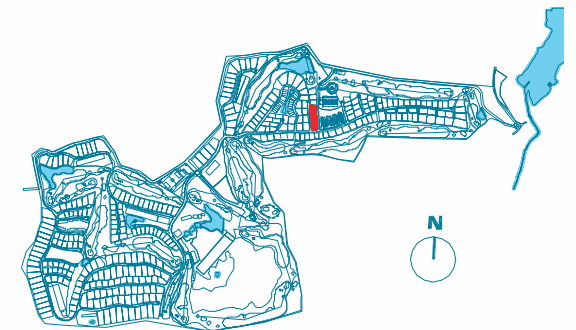
“The combined living spaces are arranged into two separate and distinct areas – the day area to the East and the night area to the West . . . The day area comprises the dining room and kitchen that are connected by sliding doors and the lounge. This area extends to the exterior, due South, through a covered space and also to the entrance courtyard, allowing via this space an interconnection of the day areas of the house, guaranteeing continual living between the interior and exterior spaces during good weather.”

Carlos Prata
Architect

Photographs are illustrative only. Details and specification may be subject to variation and should not form part of any contract.



1. HALL
2. LIVING ROOM
3. DINING ROOM
4. KITCHEN
5. LAUNDRY
6. WC
7. HALLWAY
8. SUITE
9. DRESSING ROOM
10. BATHROOM
11. COVERED TERRACE
12. TERRACE
13. GARAGE



Architectural plan not yet adapted to engineering plans. Subject to changes.