

Specification

Living room, dining room and bedrooms

- Wall – painted stucco
- Flooring – hydraulic tile

Kitchen

- Wall – composite stone and painted stucco
- Flooring – hydraulic tile
- Base units – laminate and composite stone
- Appliances:
 - Microwave oven
 - Main oven
 - Ceramic hob
 - Extractor fan
 - Refrigerator
 - Dishwasher

Bathrooms

Wc

- Wall – terracotta tile and painted stucco
- Flooring – hydraulic tile
- Stone wash basin
- Sanitaryware by Catalano

Main en-suite bathroom

- Wall – marble and painted stucco
- Flooring – hydraulic tile
- Stone wash basin
- Sanitaryware by Catalano

Bathrooms

- Wall – terracotta tile and painted stucco
- Flooring – hydraulic tile
- Stone wash basin
- Sanitaryware by Catalano

Miscellaneous

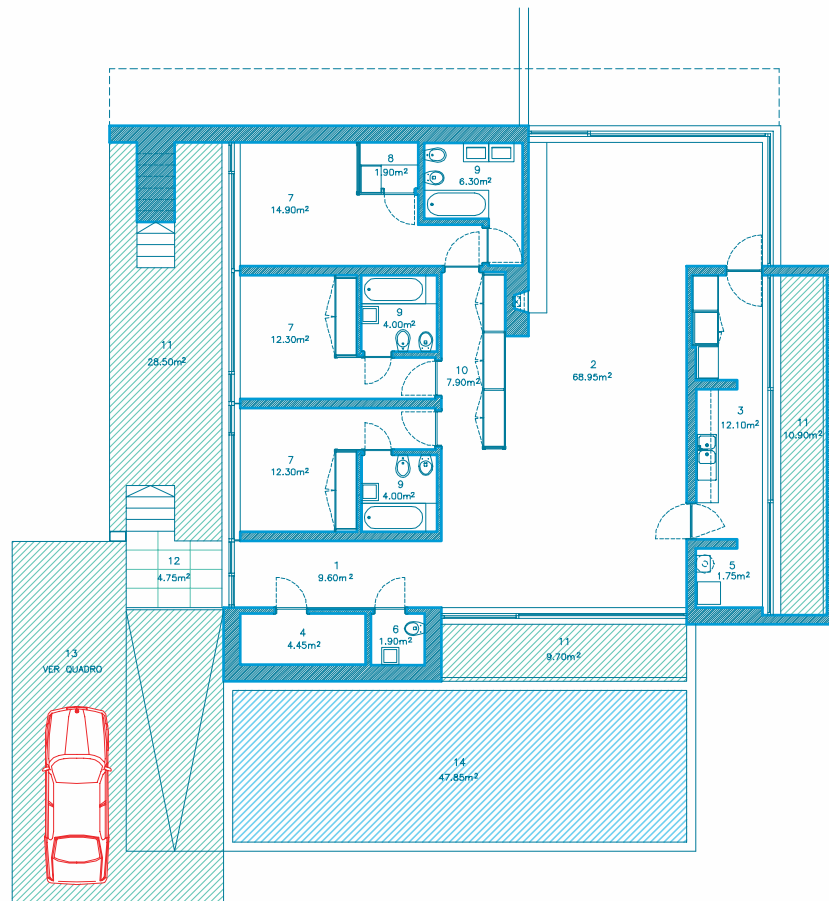
- Gas central heating
- Cable TV infrastructure
- Security alarm
- Broadband internet infrastructure
- Pre-installation for air conditioning
- Automatic roof irrigation system
- Fireplace or stove



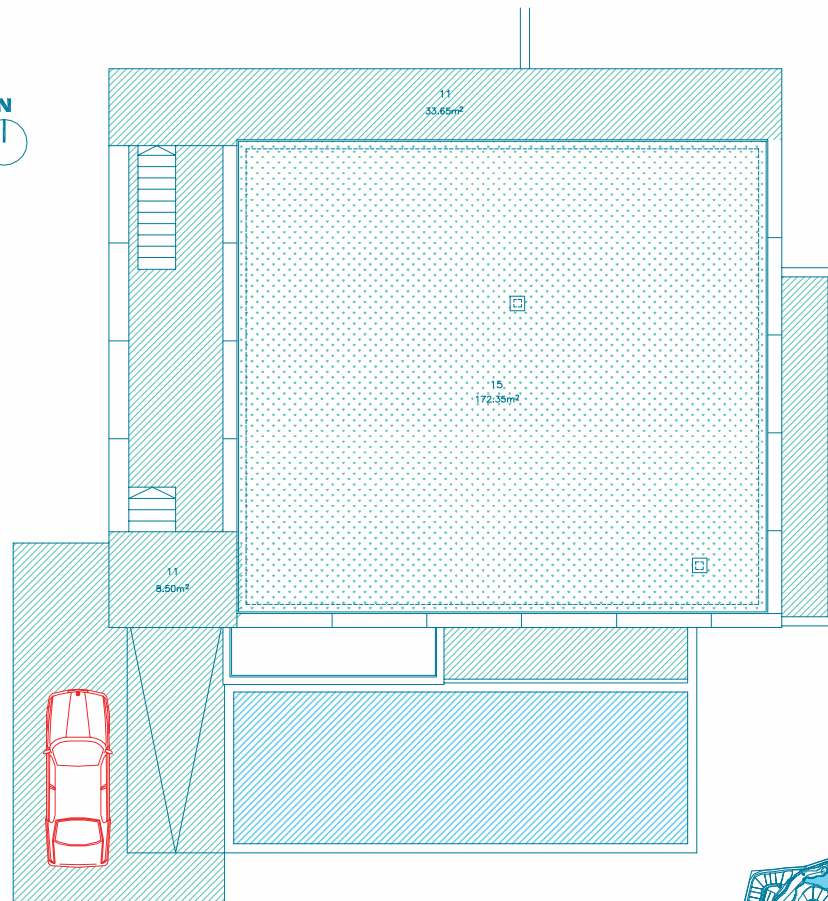
“The typology is arranged in a set of spaces with corresponding distinct functional areas on which is placed a flagstone paved garden area . . . for the cover there is access through the bedrooms courtyard for maintenance and use of the garden.”

Nuno Brandão Costa
Architect

Photographs are illustrative only. Details and specification may be subject to variation and should not form part of any contract.



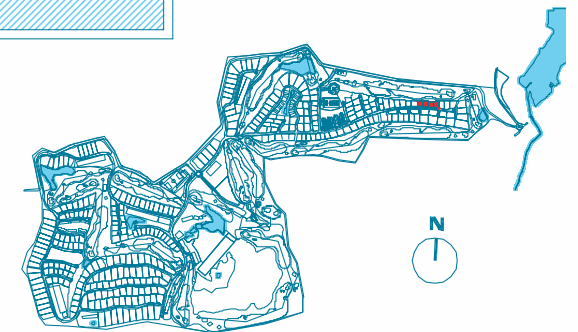
PLANTA DO PISO



PLANTA DA COBERTURA



- | | | |
|---------------------------|------------------|---------------------|
| 1. HALL | 6. WC | 11. TERRACE |
| 2. LIVING AND DINING ROOM | 7. SUITE | 12. COVERED TERRACE |
| 3. KITCHEN | 8. DRESSING ROOM | 13. PARKING LOT |
| 4. STOREROOM | 9. BATHROOM | 14. SWIMMING POOL |
| 5. LAUNDRY | 10. HALLWAY | 15. GARDEN |



Architectural plan not yet adapted to engineering plans. Subject to changes.