

# LOTS 333, 336, 337, 340, 341, 344

## FOUR BEDROOM VILLAS

### Specification

#### Living and dining room

- Walls – painted stucco
- Flooring – wood and marble

#### Bedrooms

- Walls – painted stucco
- Flooring – wood

#### Kitchen

- Wall – tile and painted stucco
- Flooring – composite stone
- Furniture – birch faced and composite stone
- Appliances:
  - Microwave oven
  - Main oven
  - Ceramic hob
  - Extractor fan
  - Refrigerator
  - Dishwasher

#### Bathrooms

##### Wc

- Wall – marble and painted stucco
- Flooring – marble
- Stone wash basin
- Sanitaryware by Catalano

##### Main en-suite bathroom

- Wall – tile and painted stucco
- Flooring – marble
- White ceramic wash basin
- Sanitaryware by Catalano

##### Bathroom

- Wall – tile and painted stucco
- Flooring – marble
- White ceramic wash basin
- Sanitaryware by Catalano

#### Miscellaneous

- Gas central heating
- Cable TV infrastructure
- Security alarm
- Broadband internet infrastructure
- Pre-installation for air conditioning
- Automatic roof irrigation system
- Fireplace or stove

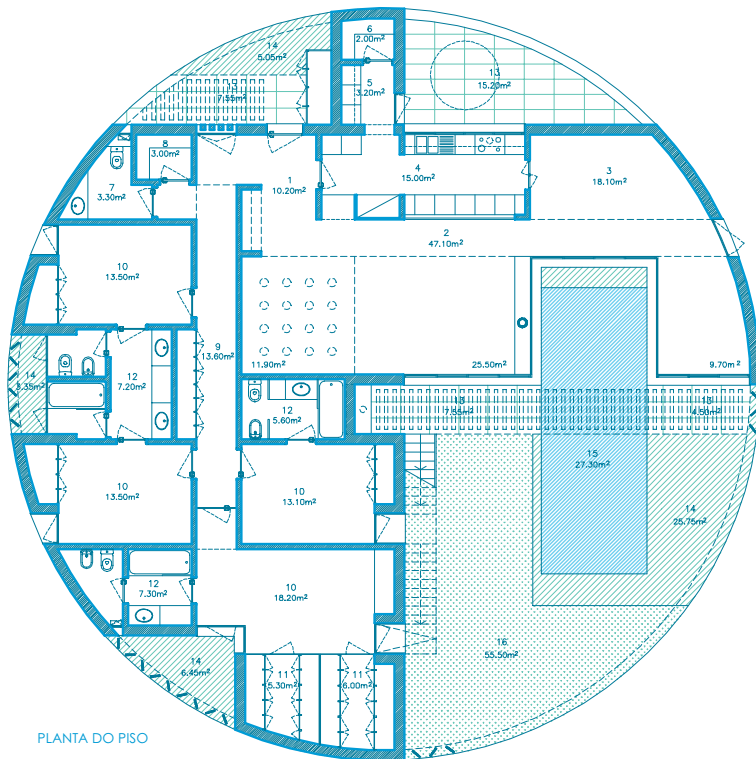


“The flat vegetable covered roofs served as a starting point for the design of a terrace with access from the central courtyard to the ‘L’. It contains a small solarium placed slightly lower than the house and a mirrored water pool and when the ‘Music Room’ is covered will illuminate it from above through a series of small skylights that will sense the undulation of the water (at night electric lights will create the same sort of effect and reflections).”

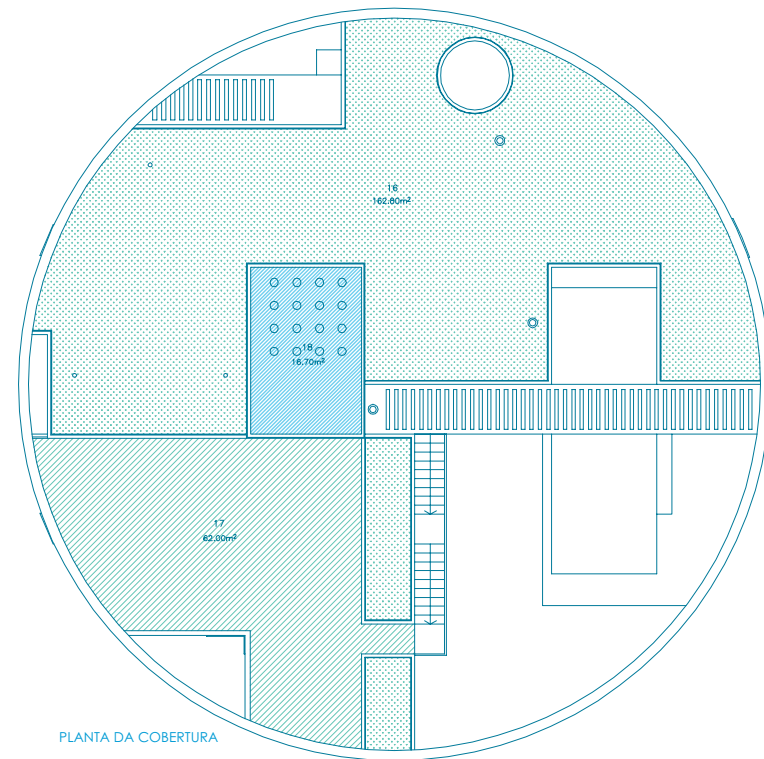
**Manuel Graça Dias and Egas Vieira**

Architects

Photographs are illustrative only. Details and specification may be subject to variation and should not form part of any contract.



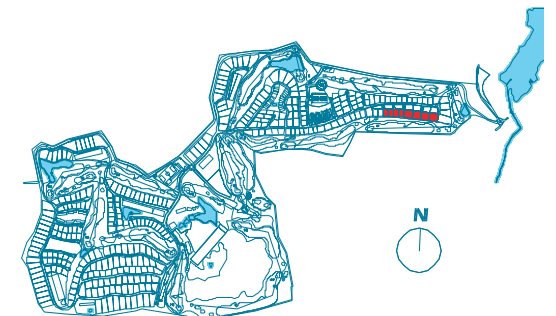
PLANTA DO PISO



PLANTA DA COBERTURA



- |                |                   |                     |
|----------------|-------------------|---------------------|
| 1. HALL        | 7. WC             | 13. COVERED TERRACE |
| 2. LIVING ROOM | 8. STORE ROOM     | 14. TERRACE         |
| 3. DINING ROOM | 9. HALLWAY        | 15. SWIMMING POOL   |
| 4. KITCHEN     | 10. SUITE         | 16. GARDEN          |
| 5. LAUNDRY     | 11. DRESSING ROOM | 17. SOLARIUM        |
| 6. PANTRY      | 12. BATHROOM      | 18. REFLECTING POOL |



Architectural plan not yet adapted to engineering plans. Subject to changes.