

**Specification**

**Living room and dining room**

- Wall – painted stucco
- Flooring – solid wood

**Bedrooms**

- Wall – painted stucco
- Flooring – solid wood

**Kitchen**

- Wall – painted stucco
- Flooring – composite stone
- Furniture – laminate and composite stone
- Appliances:
  - Microwave oven
  - Main oven
  - Ceramic hob
  - Extractor fan
  - Refrigerator
  - Dishwasher

**Bathrooms**

**Wc**

- Wall – marble and painted stucco
- Flooring – marble
- White ceramic wash basin
- Sanitaryware by GSI

**Main en-suite bathroom**

- Wall – marble and painted stucco
- Flooring – marble
- White ceramic wash basin
- Sanitaryware by GSI

**Bathrooms**

- Wall – marble and painted stucco
- Flooring – marble
- White ceramic wash basin
- Sanitaryware by GSI

**Miscellaneous**

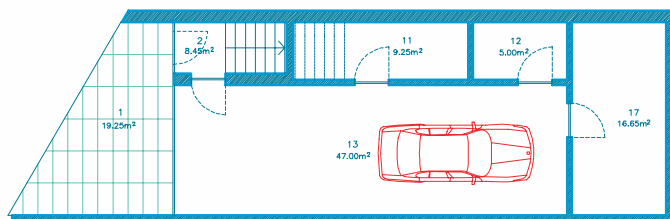
- Gas central heating
- Cable TV infrastructure
- Security alarm
- Broadband internet infrastructure
- Pre-installation for air conditioning
- Automatic roof irrigation system
- Fireplace or stove



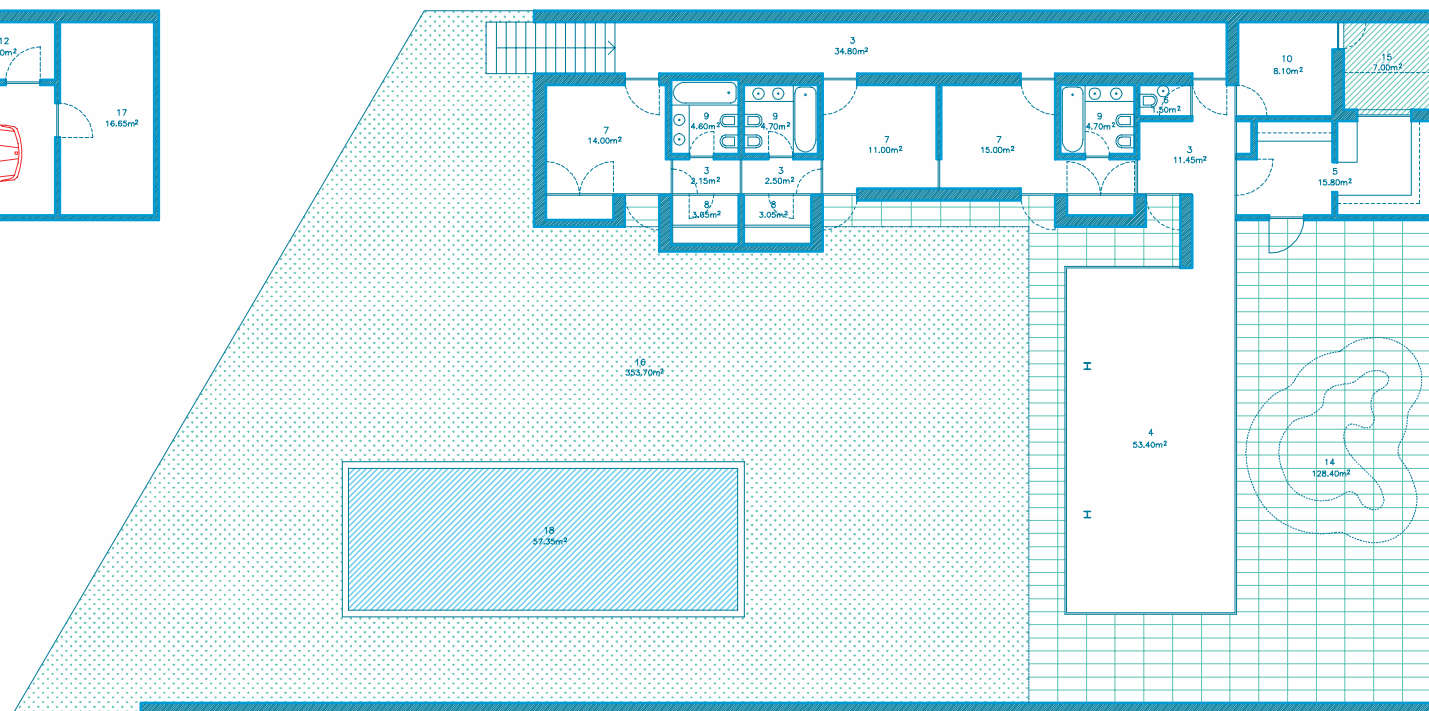
“The boundary walls blend with the greenery promoting intimacy between them. The rooms dissociate and are freely organised as independent and autonomous cells. The idea is reinforced with pictorial observations and the introduction of pigment to the whitewash in order to personalize the different elements.”

**Álvaro Leite Siza**  
Architect

Photographs are illustrative only. Details and specification may be subject to variation and should not form part of any contract.

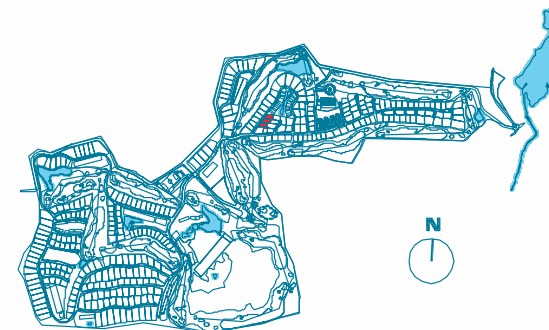


PLANTA DO PISO -1



PLANTA DO PISO 0

- |                             |                  |                     |
|-----------------------------|------------------|---------------------|
| 1. COVERED ENTRANCE TERRACE | 7. SUITE         | 13. GARAGE          |
| 2. HALL                     | 8. DRESSING ROOM | 14. COVERED TERRACE |
| 3. HALLWAY/STAIRS           | 9. BATHROOM      | 15. TERRACE         |
| 4. LIVING AND DINING ROOM   | 10. LAUNDRY      | 16. GARDEN          |
| 5. KITCHEN                  | 11. STOREROOM    | 17. TECHNICAL ROOM  |
| 6. WC                       | 12. WINE-CELLAR  | 18. SWIMMING POOL   |



Architectural plan not yet adapted to engineering plans. Subject to changes.