

LOT 158 ONE BEDROOM TOWNHOUSES

Specification

Living and dining room

- Wall – painted stucco
- Flooring – terracotta or hydraulic tile

Bedroom

- Wall – painted stucco
- Flooring – wood

Kitchen

- Wall – composite stone and painted stucco
- Flooring – terracotta or hydraulic tile
- Furniture – laminate and composite stone
- Appliances:
 - Microwave oven
 - Main oven
 - Ceramic hob
 - Extractor fan
 - Refrigerator
 - Dishwasher

Bathrooms

Wc

- Wall – tile and painted stucco
- Flooring – terracotta or hydraulic tile
- Stone wash basin
- Sanitaryware by Catalano

En-suite bathroom

- Wall – tile and painted stucco
- Flooring – wood
- White ceramic wash basin
- Sanitaryware by Catalano

Miscellaneous

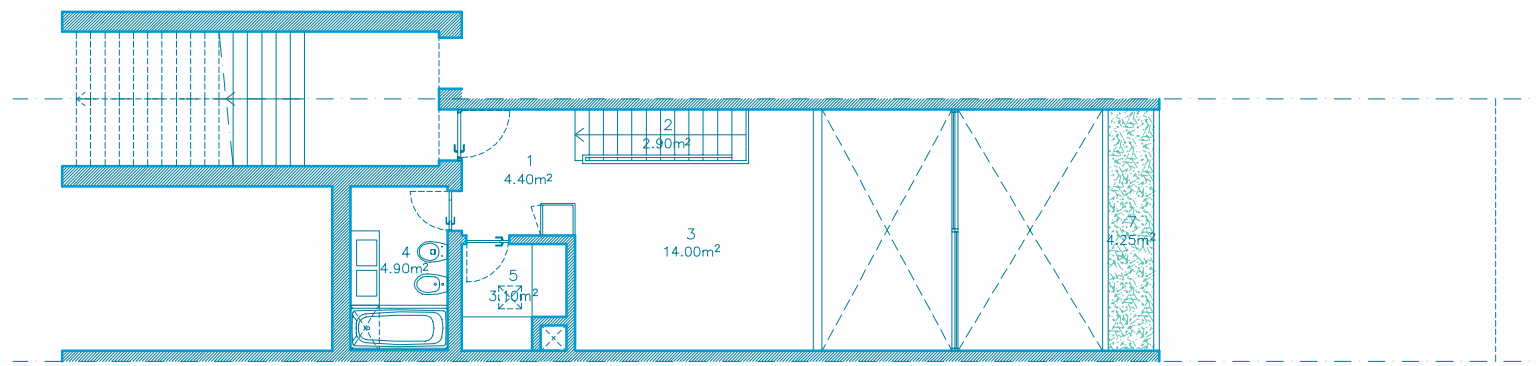
- Air conditioning
- Cable TV infrastructure
- Security alarm
- Broadband internet infrastructure
- Communal swimming pool for each lot
- Automatic roof irrigation system
- Fireplace or stove



“The various elements that constitute the project are set along the length of the plot in a way that they best blend with the existing topography/geography, totally encompassing the continuous valley.”

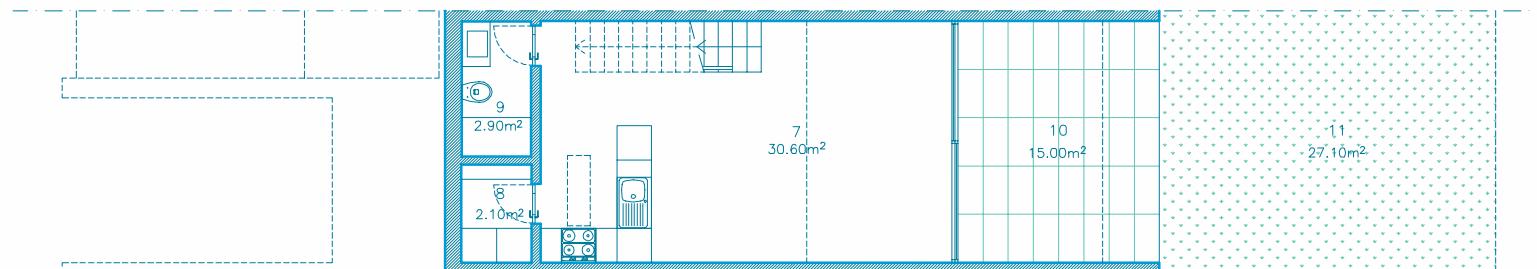
Nuno Graça Moura
Architect

Photographs are illustrative only. Details and specification may be subject to variation and should not form part of any contract.

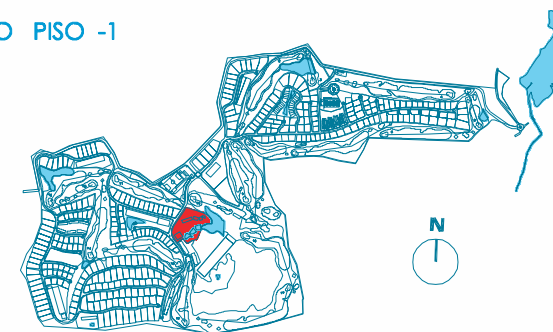


PLANTA DO PISO 0

1. HALL
2. HALLWAY/STAIRS
3. BEDROOM
4. BATHROOM
5. DRESSING ROOM
6. FLOWER VASE
7. LIVING AND DINING ROOM
8. STOREROOM
9. WC
10. COVERED TERRACE
11. GARDEN



PLANTA DO PISO -1



Architectural plan not yet adapted to engineering plans. Subject to changes.