

Specification

Living room, dining room

- Wall – painted stucco
- Flooring – terracotta tile

Bedrooms

- Wall – painted stucco
- Flooring – terracotta tile

Kitchen

- Wall – terracotta tile and painted stucco
- Flooring – composite stone
- Furniture – birch faced and composite stone
- Appliances:
 - Microwave oven
 - Main oven
 - Ceramic hob
 - Extractor fan
 - Refrigerator
 - Dishwasher

Bathrooms

Wc

- Wall – marble and painted stucco
- Flooring – marble
- Stone wash basin
- Sanitaryware by GSI

Main en-suite bathroom

- Wall – marble and painted stucco
- Flooring – marble
- White ceramic wash basin
- Sanitaryware by GSI

Bathrooms

- Wall – terracotta tile and painted stucco
- Flooring – marble
- White ceramic wash basin
- Sanitaryware by GSI

Miscellaneous

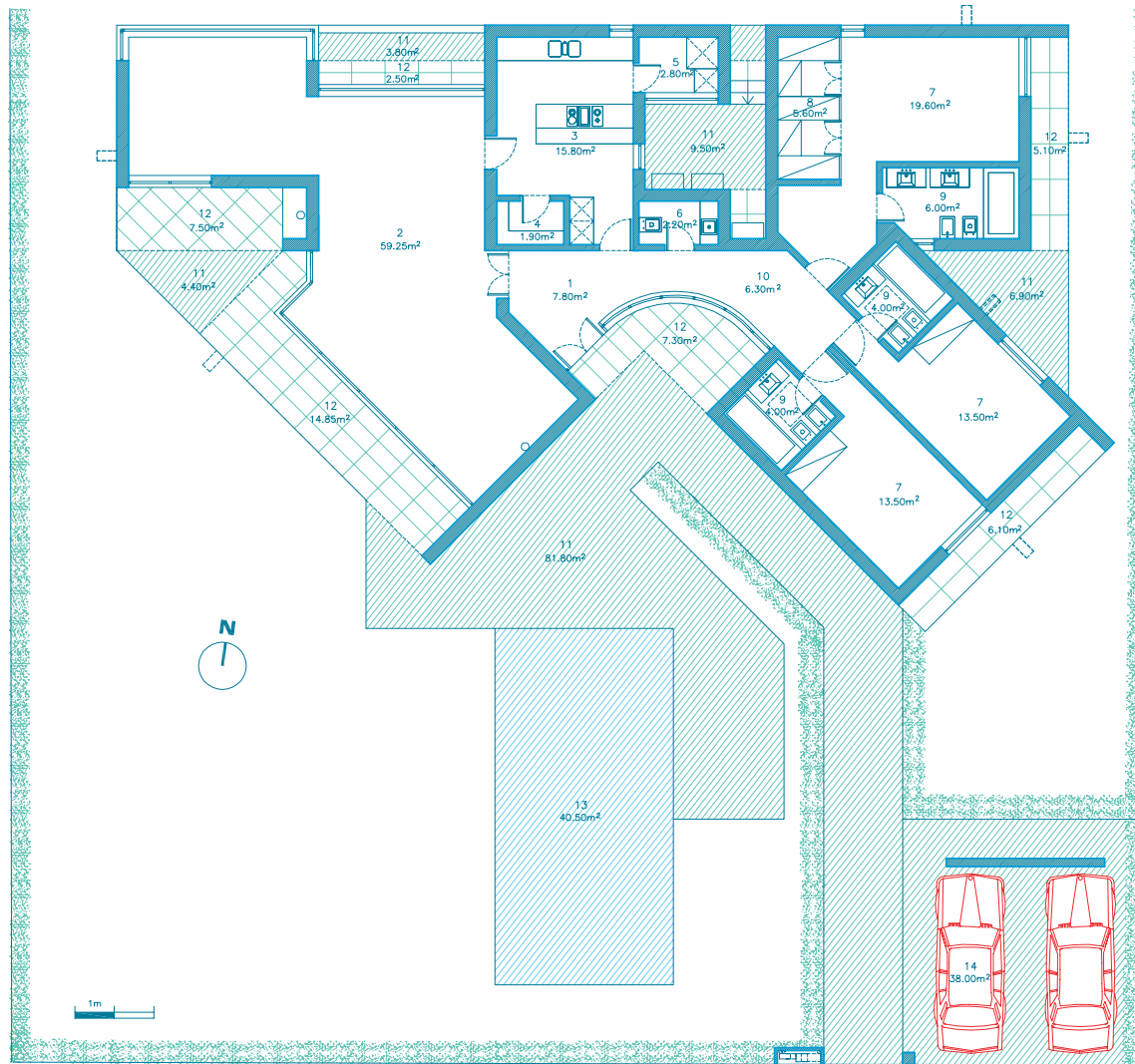
- Gas central heating
- Cable TV infrastructure
- Security alarm
- Broadband internet infrastructure
- Pre-installation for air conditioning
- Automatic roof irrigation system
- Fireplace or stove



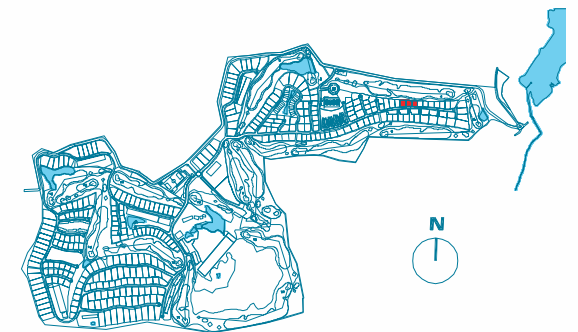
“The current plan of this project displays a clear division between the ‘living area’ and bedrooms where the approach of distribution between the various spaces is the only instrumental element in the continuity of spacious interior. The house is the product of a combination of two geometrical forms, whose intersection defines a triangular skylight over the circulation space in the entrance area: a parallelepiped space in the direction E/W with a raised roof, rotated 45° over the first space.”

Madalena Cardoso de Menezes
Francisco Teixeira Bastos
Architects

Photographs are illustrative only. Details and specification may be subject to variation and should not form part of any contract.



1. HALL
2. LIVING AND DINING ROOM
3. KITCHEN
4. PANTRY
5. LAUNDRY
6. WC
7. SUITE
8. DRESSING ROOM
9. BATHROOM
10. HALLWAY
11. TERRACE
12. COVERED TERRACE
13. SWIMMING POOL
14. PARKING LOTS



Architectural plan not yet adapted to engineering plans. Subject to changes.